

Getting Started



FIERY XJ BP100

ELECTRONICS FOR IMAGING, INC.



Getting Started

FIERY XJ BP100

ELECTRONICS FOR IMAGING, INC.



Copyright © 1998 Electronics for Imaging, Inc. All rights reserved.

This publication is protected by copyright, and all rights are reserved. No part of it may be reproduced or transmitted in any form or by any means for any purpose without express prior written consent from Electronics for Imaging, Inc., except as expressly permitted herein. Information in this document is subject to change without notice and does not represent a commitment on the part of Electronics for Imaging, Inc.

The software described in this publication is furnished under license and may only be used or copied in accordance with the terms of such license.

Patents: 5,666,436; 5,553,200; 5,543,940; 5,537,516; 5,517,334; 5,506,946; 5,424,754; 5,343,311; 5,212,546; 4,941,038; 4,837,722; 4,500,919

Trademarks

EFI, the EFI logo, Fiery, the Fiery logo, EFICOLOR, and Rip-While-Print are trademarks registered in the U.S. Patent and Trademark Office. Fiery XJ, Fiery Driven, the Fiery Driven logo, Command WorkStation, AutoCal, Starr Compression, Memory Multiplier, ColorWise, NetWise, and VisualCal are trademarks of Electronics for Imaging, Inc.

Adobe, the Adobe logo, Adobe Illustrator, PostScript, Adobe Photoshop, Adobe Separator, and Adobe PageMaker are trademarks of Adobe Systems Incorporated, registered in certain jurisdictions. EPS (Encapsulated PostScript) is a trademark of Altsys Corporation. Apple, the Apple logo, AppleShare, AppleTalk, EtherTalk, LaserWriter, and Macintosh are registered trademarks, and MultiFinder is a trademark of Apple Computer, Inc. Microsoft, MS, MS-DOS, and Windows are registered trademarks of Microsoft in the US and other countries. QuarkXPress is a registered trademark of Quark, Inc. Times, Helvetica, and Palatino are trademarks of Linotype AG and/or its subsidiaries. ITC Avant Garde, ITC Bookman, ITC Zapf Chancery, and ITC Zapf Dingbats are registered trademarks of International Typeface Corporation. Ethernet is a registered trademark of Xerox Corporation. Farallon, PhoneNET PC, and PhoneNET Talk are trademarks of Farallon Computing, Inc. COPS and COPSTalk are trademarks of CoOperative Printing Solutions, Inc. NetWare and Novell are registered trademarks and Internetwork Packet Exchange (IPX) is a trademark of Novell, Inc. SyQuest is a registered trademark, in the United States and certain other countries, of SyQuest Technology, Inc. UNIX is a registered trademark of UNIX System Laboratories, a wholly owned subsidiary of Novell, Inc.

All other terms and product names may be trademarks or registered trademarks of their respective owners, and are hereby acknowledged.

Legal Notices

APPLE COMPUTER, INC. ("APPLE") MAKES NO WARRANTIES, EXPRESS OR IMPLIED, INCLUDING WITHOUT LIMITATION THE IMPLIED WARRANTIES OF MERCHANTABILITY AND FITNESS FOR A PARTICULAR PURPOSE, REGARDING THE APPLE SOFTWARE. APPLE DOES NOT WARRANT, GUARANTEE, OR MAKE ANY REPRESENTATIONS REGARDING THE USE OR THE RESULTS OF THE USE OF THE APPLE SOFTWARE IN TERMS OF ITS CORRECTNESS, ACCURACY, RELIABILITY, CURRENTNESS, OR OTHERWISE. THE ENTIRE RISK AS TO THE RESULTS AND PERFORMANCE OF THE APPLE SOFTWARE IS ASSUMED BY YOU. THE EXCLUSION OF IMPLIED WARRANTIES IS NOT PERMITTED BY SOME STATES. THE ABOVE EXCLUSION MAY NOT APPLY TO YOU.

IN NO EVENT WILL APPLE, ITS DIRECTORS, OFFICERS, EMPLOYEES OR AGENTS BE LIABLE TO YOU FOR ANY CONSEQUENTIAL, INCIDENTAL OR INDIRECT DAMAGES (INCLUDING DAMAGES FOR LOSS OF BUSINESS PROFITS, BUSINESS INTERRUPTION, LOSS OF BUSINESS INFORMATION, AND THE LIKE) ARISING OUT OF THE USE OR INABILITY TO USE THE APPLE SOFTWARE EVEN IF APPLE HAS BEEN ADVISED OF THE POSSIBILITY OF SUCH DAMAGES. BECAUSE SOME STATES DO NOT ALLOW THE EXCLUSION OR LIMITATION OF LIABILITY FOR CONSEQUENTIAL OR INCIDENTAL DAMAGES, THE ABOVE LIMITATIONS MAY NOT APPLY TO YOU. Apple's liability to you for actual damages from any cause whatsoever, and regardless of the form of the action (whether in contract, tort [including negligence], product liability or otherwise), will be limited to \$50.

Restricted Rights Legends

For defense agencies: Restricted Rights Legend. Use, reproduction, or disclosure is subject to restrictions set forth in subparagraph (c)(1)(ii) of the Rights in Technical Data and Computer Software clause at 252.227.7013.

For civilian agencies: Restricted Rights Legend. Use, reproduction, or disclosure is subject to restrictions set forth in subparagraph (a) through (d) of the commercial Computer Software Restricted Rights clause at 52.227-19 and the limitations set forth in Electronics for Imaging, Inc.'s standard commercial agreement for this software. Unpublished rights reserved under the copyright laws of the United States.

Printed in the United States of America on recycled paper.

Part Number: 45000217

FCC Information

WARNING: FCC Regulations state that any unauthorized changes or modifications to this equipment not expressly approved by the manufacturer could void the user's authority to operate this equipment.

NOTE: This equipment has been tested and found to comply with the limits for a Class A digital device, pursuant to Part 15 of the FCC Rules. These limits are designed to provide reasonable protection against harmful interference when the equipment is operated in a commercial environment. This equipment generates, and uses, and can radiate radio frequency energy and, if not installed and used in accordance with the instruction manual, may cause harmful interference to radio communications. Operation of this equipment in a residential area is likely to cause interference in which case the user will be required to correct the interference at his own expense.

Industry Canada Class A Notice

This digital apparatus does not exceed the Class A limits for radio noise emissions from digital apparatus as set out in the interference-causing equipment standard entitled, "Digital Apparatus" ICES-003 from Industry Canada.

Avis de Conformation Classe A d l'Industrie Canada

Le présent appareil numérique n'émet pas de bruits radioélectriques dépassant les limites applicables aux appareils numériques de la Classe A prescrites dans la norme sur le matériel brouilleur, "Appareils Numériques" NMB-003 édictée par l'Industrie Canada.

Certificate by Manufacturer/Importer

This is to certify that the FC07 is shielded against radio interference in accordance with the provisions of VFG 243/1991. The German Postal Services have been advised that this device is being put on the market and that they have been given the right to inspect the series for compliance with the regulations. Electronics for Imaging, Inc.

Bescheinigung des Herstellers/Importeurs

Heirmit wird bescheinigt, dass der FC07 im Uebereinstimmung mit den Bestimmungen der VFG 243/1991 Funk-Entstort ist. Der Deutschen Bundespost wurde das Inverkehrbringen dieses Geraetes angezeigt und die Berechtigung zur Ueberpruefung der Serie auf Einhaltung der Bestimmungen eingeräumt. Electronics for Imaging, Inc.

RFI Compliance Notice

This equipment has been tested concerning compliance with the relevant RFI protection requirements both individually and on system level (to simulate normal operation conditions). However, it is possible that these RFI Requirements are not met under certain unfavorable conditions in other installations. It is the user who is responsible for compliance of his particular installation.

Dieses Geraet wurde einzeln sowohl als auch in einer Anlage, die einen normalen Anwendungsfall nachbildet, auf die Einhaltung der Funk-entstoerbestimmungen gepruengt. Es ist jedoch moeglich, dass die Funk-entstoerbestimmungen unter unguenstigen Umstaenden bei anderen Geraetekombinationen nicht eingehalten werden. Fuer die Einhaltung der Funk-entstoerbestimmungen seigner gesamten Anlage, in der dieses Geraet betrieben wird, ist der Betreiber verantwortlich.

Compliance with applicable regulations depends on the use of shielded cables. It is the user who is responsible for procuring the appropriate cables.

Einhaltung mit betreffenden Bestimmungen kommt darauf an, dass geschirmte Ausfuehrungen gebraucht werden. Fuer die beschaffung richtiger Ausfuehrungen ist der Betreiber verantwortlich.

Software License Agreement

Before using the Software, please carefully read the following terms and conditions. BY USING THIS SOFTWARE, YOU SIGNIFY THAT YOU HAVE ACCEPTED THE TERMS OF THIS AGREEMENT. If you cannot or do not accept these terms, you may return the entire package within ten (10) days to the Distributor or Dealer from which you obtained them for a full refund.

Electronics for Imaging, Inc. grants to you a non-exclusive, non-transferable license to use the software and accompanying documentation ("Software") included with the Fiery XJ you have purchased, including without limitation the PostScript[®] software provided by Adobe Systems Incorporated.

You may:

- a. use the Software solely for your own customary business purposes and solely with Fiery XJ;
- b. use the digitally-encoded machine-readable outline and bitmap programs ("Font Programs") provided with Fiery XJ in a special encrypted format ("Coded Font Programs") to reproduce and display designs, styles, weights, and versions of letters, numerals, characters and symbols ("Typefaces") solely for your own customary business purposes on the display window of the Fiery XJ or monitor used with the Fiery XJ;

- c. use the trademarks used by Electronics for Imaging to identify the Coded Font Programs and Typefaces reproduced therefrom ("Trademarks"); and
- d. assign your rights under this Agreement to a transferee of all of your right, title and interest in and to Fiery XJ provided the transferee agrees to be bound by all of the terms and conditions of this Agreement.

You may not:

- a. make use of the Software, directly or indirectly, to print bitmap images with print resolutions of 600 dots per inch or greater, or to generate fonts or typefaces for use other than with Fiery XJ;
- b. make or have made, or permit to be made, any copies of the Software, Coded Font Programs, accompanying documentation or portions thereof, except as necessary for use with the Fiery XJ unit purchased by you; provided, however, that under no circumstances may you make or have made, or permit to be made, any copies of that certain portion of the Software which has been included on the Fiery XJ hard disk drive. You may not copy the documentation;
- c. attempt to alter, disassemble, decrypt or reverse engineer the Software, Coded Font Programs or accompanying documentation.
- d. rent or lease the Software.

Proprietary Rights

You acknowledge that the Software, Coded Font Programs, Typefaces, Trademarks and accompanying documentation are proprietary to Electronics for Imaging and its suppliers and that title and other intellectual property rights therein remain with Electronics for Imaging and its suppliers. Except as stated above, this Agreement does not grant you any right to patents, copyrights, trade secrets, trademarks (whether registered or unregistered), or any other rights, franchises or licenses in respect of the Software, Coded Font Programs, Typefaces, Trademarks or accompanying documentation. You may not adapt or use any trademark or trade name which is likely to be similar to or confusing with that of Electronics for Imaging or any of its suppliers or take any other action which impairs or reduces the trademark rights of Electronics for Imaging or its suppliers. The trademarks may only be used to identify printed output produced by the Coded Font Programs. At the reasonable request of Electronics for Imaging, you must supply samples of any Typeface identified with a trademark.

Confidentiality

You agree to hold the Software and Coded Font Programs in confidence, disclosing the Software and Coded Font Programs only to authorized users having a need to use the Software and Coded Font Programs as permitted by this Agreement and to take all reasonable precautions to prevent disclosure to other parties.

Remedies

Unauthorized use, copying or disclosure of the Software, Coded Font Programs, Typefaces, Trademarks or accompanying documentation will result in automatic termination of this license and will make available to Electronics for Imaging other legal remedies.

Limited Warranty And Disclaimer

Electronics for Imaging warrants that, for a period of ninety (90) days from the date of delivery to you, the Software under normal use will perform without significant errors that make it unusable. Electronics for Imaging's entire liability and your exclusive remedy under this warranty (which is subject to you returning Fiery XJ to Electronics for Imaging or an authorized dealer) will be, at Electronics for Imaging's option, to use reasonable commercial efforts to attempt to correct or work around errors, to replace the Software with functionally equivalent software, or to refund the purchase price and terminate this Agreement. Some states do not allow limitations on duration of implied warranty, so the above limitation may not apply to you.

Except for the above express limited warranty, Electronics for Imaging makes and you receive no warranties or conditions on the Products, express, implied, or statutory, and Electronics for Imaging specifically disclaims any implied warranty or condition of merchantability or fitness for a particular purpose.

For warranty service, please contact your authorized service/support center.

EXCEPT FOR THE ABOVE EXPRESS LIMITED WARRANTY, ELECTRONICS FOR IMAGING MAKES AND YOU RECEIVE NO WARRANTIES OR CONDITIONS ON THE SOFTWARE OR CODED FONT PROGRAMS, EXPRESS, IMPLIED, STATUTORY, OR IN ANY OTHER PROVISION OF THIS AGREEMENT OR COMMUNICATION WITH YOU, AND ELECTRONICS FOR IMAGING SPECIFICALLY DISCLAIMS ANY IMPLIED WARRANTY OR CONDITION OF MERCHANTABILITY OR FITNESS FOR A PARTICULAR PURPOSE. Electronics for Imaging does not warrant that the operation of the software will be uninterrupted or error free or that the Software will meet your specific requirements.

Limitation Of Liability

IN NO EVENT WILL ELECTRONICS FOR IMAGING OR ITS SUPPLIERS BE LIABLE FOR ANY DAMAGES, INCLUDING LOSS OF DATA, LOST PROFITS, COST OF COVER OR OTHER SPECIAL, INCIDENTAL, CONSEQUENTIAL OR INDIRECT DAMAGES ARISING FROM THE USE OF THE SOFTWARE, CODED FONT PROGRAMS OR ACCOMPANYING DOCUMENTATION, HOWEVER CAUSED AND ON ANY THEORY OF LIABILITY. THIS LIMITATION WILL APPLY EVEN IF ELECTRONICS FOR IMAGING OR ANY AUTHORIZED DEALER HAS BEEN ADVISED OF THE POSSIBILITY OF SUCH DAMAGE. YOU ACKNOWLEDGE THAT THE PRICE OF THE UNIT REFLECTS THIS ALLOCATION OF RISK. BECAUSE SOME STATES/JURISDICTIONS DO NOT ALLOW THE EXCLUSION OR LIMITATION OF LIABILITY FOR CONSEQUENTIAL OR INCIDENTAL DAMAGES, THE ABOVE LIMITATION MAY NOT APPLY TO YOU.

Export Controls

You agree that you will not export or re-export the Software or Coded Font Programs in any form without the appropriate United States and foreign government licenses. Your failure to comply with this provision is a material breach of this Agreement.

Government Use

Use, duplication or disclosure of the Software by the United States Government is subject to restrictions as set forth in subdivision (c) (1) (ii) of the Rights in Technical Data and Computer Software clause at DFARS 252.227-7013 or in subparagraphs (c) (1) and (2) of the Commercial Computer Software—Restricted Right Clause at 48 CFR 52.227-19, as applicable.

Third Party Beneficiary

You are hereby notified that Adobe Systems Incorporated, a California corporation located at 345 Park Avenue, San Jose, CA 95110-2704 (“Adobe”) is a third-party beneficiary to this Agreement to the extent that this Agreement contains provisions which relate to your use of the Fonts, the Coded Font Programs, the Typefaces and the Trademarks licensed hereby. Such provisions are made expressly for the benefit of Adobe and are enforceable by Adobe in addition to Electronics for Imaging.

General

This Agreement will be governed by the laws of the State of California.

This Agreement is the entire agreement held between us and supersedes any other communications or advertising with respect to the Software, Coded Font Programs and accompanying documentation.

If any provision of this Agreement is held invalid, the remainder of this Agreement shall continue in full force and effect.

If you have any questions concerning this Agreement, please write to Electronics for Imaging, Inc., Attn: Licensing Dept. or see Electronics for Imaging’s web site at www.efi.com.

Electronics for Imaging, Inc.
2855 Campus Drive
San Mateo, CA 94403

Contents

Introduction

Copier models supported	ix
About the media pack	ix
About the documentation	x
Specifications	x
User software	xi
System requirements	xii
Windows	xii
Mac OS	xiii
UNIX (TCP/IP)	xiv
Parallel port	xiv
IPX (Novell)	xiv

Installing User Software on a Windows Computer

Installing Windows software	1
Downloading printer files with the Installer WebTool	2
Setting up the Fiery XJ as a PostScript printer	2
Setting up PostScript printing with Windows 95	2
Setting up PostScript printing with Windows NT 4.0	17
Installing Fiery XJ software	27
Fiery Downloader	28
Fiery Spooler	30
Using the software for the first time	32
Configuring the connection for Fiery Downloader	32
Configuring the connection for Fiery Spooler	35
Copying color files from the User Software CD	38

Installing User Software on a Mac OS Computer

Installing Mac OS software	39
Setting up PostScript printing with Mac OS	40
Setting up the Fiery XJ in the Chooser	41
Installing Fiery XJ software	42
Screen fonts	43
Copying color files from the User Software CD	44

Downloading Installers with Fiery WebTools

Setting up Fiery WebTools	45
Using the Installer WebTool	46

Troubleshooting

On a Windows computer	49
Setting up IPX (Novell) printing for Windows NT Workstation	49
Installing the Adobe PostScript Printer Driver	49
Problems with the Fiery utilities on Windows 95 or Windows NT	49
On a Mac OS computer	50
Setting up the Fiery XJ in the Chooser	50

Index

Introduction

This manual describes how to install the user software for the Fiery XJ BP100 Color Server™ and set up printing from Windows and Mac OS computers. For information about setting up network servers and clients to use the Fiery XJ, see the *Administrator Guide*. For general information on using the color copier, your computer, your application software, or your network, see the manuals that accompany those products.

Copier models supported

The Fiery XJ supports the following color copiers:

- Ricoh Aficio Color 5106 and 5206
- Lanier 5606DC
- Sharp AR-C861 and AR-C862
- Gestetner 2606 and 2606e
- nashuatec C606 and C606e
- Rex Rotary CC8606 and CC8606E
- infotec 7316 and 7316E
- Savin SDC206 and SDC206E

This manual uses the term “R2” to refer to all these copier models.

About the media pack

Your Fiery XJ includes a media pack containing:

- User Software CD
- Documentation set

About the documentation

This manual is part of the set of Fiery XJ documentation, which includes the following manuals for users and system administrators:

- The *Administrator Guide* explains basic configuration and administration of the Fiery XJ for the supported platforms and network environments. It also includes guidelines for setting up UNIX, Windows NT, and Novell NetWare servers to provide Adobe PostScript printing services to clients.
- *Getting Started* describes how to install software to enable users to print to the Fiery XJ. Specifically, it describes installation of PostScript printer drivers, printer description files, and other software provided on the User Software CD. It also explains how to connect each user to the network.
- The *User Guide* describes the printing features of the Fiery XJ for users who send jobs via remote workstations on the network or via a direct parallel port connection. It also explains the functions of the Fiery WebTools and Fiery XJ client utilities and how they can be used to manage jobs, and provides troubleshooting information for problems that may arise.
- *Release Notes* provide last-minute product information and workarounds for some of the problems you may encounter.

Specifications

The Fiery XJ has the following features:

- MIPS R4700, 175 MHz CPU
- 64MB RAM
- Internal 2GB hard disk drive
- External CD-ROM drive (available as an optional kit)
- SCSI port
- Supports AppleTalk, TCP/IP, and IPX protocols simultaneously
- Supports parallel port communication
- Supports thinnet (thin coaxial Ethernet cable or 10Base2), thicknet (thick coaxial Ethernet cable or 10Base5), and unshielded twisted pair (Ethernet 10BaseT) (Ethernet 100BaseT available as an optional kit)

- Supports Token Ring networking (available as an optional kit)
- Supports Adobe PostScript 3
- Includes 136 fonts (117 Adobe Type, 1 PostScript, and 19 TrueType)
- Built-in ColorWise™ color management and NetWise™ networking features
- Fiery WebTools™
- Fiery Downloader™ and Fiery Spooler™

User software

The full set of Fiery XJ user software is provided on the User Software CD. Installers for the printer files can also be downloaded with the Installer WebTool.

Adobe PostScript Printer Driver	Enables you to print to the Fiery XJ from Windows 95 and Mac OS computers; supports special Fiery XJ and PostScript 3 features.
PostScript Printer Description files (PPDs)	Files for use with the PostScript printer driver; they allow the Fiery XJ to appear in popular applications' Print and Page Setup dialog boxes. The Fiery XJ PPDs provide information about the Fiery XJ and your particular copier model to the application and printer driver you are using.
Fiery Downloader	Enables you to print PostScript files and Encapsulated PostScript (EPS) files directly to the Fiery XJ without opening the application in which they were created. Fiery Downloader also enables you to manage the printer fonts installed on the Fiery XJ.

Fiery Spooler	Enables you to view the order and priority of print jobs, customize printer settings for jobs, delete jobs, and move jobs between queues. You can also use it to view job accounting information.
Screen Fonts (for Mac OS only)	Screen fonts for the 136 printer fonts installed on the Fiery XJ.
Color files	Includes a file to perform calibration and three target files to change the default simulation.

System requirements

To install the Fiery XJ user software on a Windows or Mac OS computer, the computer must be equipped with a built-in or external CD-ROM drive.

Windows

To print to the Fiery XJ, you need:

- A Windows-based computer with an 80486, AMD, or Pentium processor
- Windows 95 or Windows NT 4.0
- At least 4MB of RAM

To use Fiery utilities (Fiery Downloader and Fiery Spooler) you also need:

- *Either* Windows 95 *or* Windows NT 4.0 with NT Service Pack 3
- At least 16MB of RAM

To use Fiery WebTools, you also need:

- *Either* Netscape Communicator v4.0.4 with Java enabled *or* Microsoft Internet Explorer v4.0.1 with Java enabled

NOTE: Netscape and Microsoft continue to release frequent updates to their browsers. As support cannot be guaranteed for all versions, use the versions specified above for best results.

- A monitor that supports 16-bit color at a minimum resolution of 800 x 600
- A TCP/IP enabled network and the IP address or DNS name of the Fiery XJ
- Web Services enabled on the Fiery XJ

With Microsoft Windows 95, you also need:

- IPX/SPX or TCP/IP networking protocol installed

NOTE: You must have TCP/IP networking protocol installed in order to use Fiery Spooler. Fiery Spooler is not supported over IPX/SPX.

- Adobe PostScript Printer Driver for Windows version 4.2 or later (version 4.2.1 is included with the user software)

With Microsoft Windows NT 4.0 you also need:

- TCP/IP or AppleTalk networking protocol installed
- The Windows PostScript Printer Driver that came with your Windows NT 4.0 system software; however, some Fiery XJ printing features may not be available. For details, see the *User Guide*.

Mac OS

To print to the Fiery XJ, you need:

- A Mac OS-based computer
- At least 8MB of RAM
- EtherTalk installed
- Apple System software version 7.5 or later
- Adobe PostScript Printer Driver version 8.5 or later (version 8.5.1 is included with the user software)

To use the Fiery utilities (Fiery Downloader and Fiery Spooler), you also need:

- A Power Macintosh computer
- At least 16MB of RAM

UNIX (TCP/IP)

To print to the Fiery XJ with a UNIX workstation, you need:

- A workstation with standard TCP/IP connectivity (for example, Sun SPARCstation or Silicon Graphics workstation with Solaris version 2.x or SunOS version 4.1.x software)
- TCP/IP printing software that conforms to RFC1179 (Berkeley lpd protocol)

Parallel port

To print to the Fiery XJ using the parallel port, you need:

- A Windows-based computer with an 80486, AMD, or Pentium processor
- At least 4MB of RAM
- The parallel cable included with the Fiery XJ

The cable has a DB-25 male connector (that connects to the computer) on one end and a Centronics male connector (that connects to the Fiery XJ) on the other.

IPX (Novell)

To use the Fiery XJ with an IPX (Novell) network, you need:

- A Novell server
- Novell NetWare software version 4.x or 3.x
- Support for Ethernet SNAP, Ethernet II, Ethernet 802.3, Ethernet 802.2, Token Ring SNAP, or Token Ring

Installing User Software on a Windows Computer

This chapter describes installing software and setting up printing from a Windows-based computer running Windows 95 or Windows NT 4.0.

The general steps for installing the Fiery XJ software are:

- Install the Adobe PostScript printer driver (Windows 95) or Windows PostScript printer driver (Windows NT 4.0) and PostScript Printer Description files (PPDs) (for all Windows systems).
- Set up the printer driver to communicate with the Fiery XJ.
- Install Fiery Downloader and Fiery Spooler (for Windows 95 or Windows NT 4.0).
- Configure the connection for Fiery Downloader (for Windows 95 or Windows NT 4.0).
- Configure the connection for Fiery Spooler (for Windows 95 or Windows NT 4.0).

Installing Windows software

The Instalrs folder on the User Software CD contains the following installer folders:

- Download—Fiery Downloader installer
- Ps_drvr—Adobe PostScript printer driver installer for Windows 95, and Fiery XJ PPD files for Windows 95 and Windows NT 4.0
- Spooler—Fiery Spooler installer

In addition, the User Software CD includes various color files. These files must be copied or installed from the CD and placed in the appropriate locations on your hard disk (see “Copying color files from the User Software CD” on page 38):

- Calibration file to perform Autocal Letter Mode Calibration
- Three downloadable PostScript files that allow you to change the CMYK Simulation setting to DIC, Euroscale, or back to SWOP-Coated (the initial default).

Downloading printer files with the Installer WebTool

Installers for the Fiery XJ printer files can be downloaded from the Fiery XJ with the Installer WebTool (if the site administrator has enabled Internet access to the Fiery XJ). For instructions, see “Using the Installer WebTool” on page 46.

Once you download the installers, the installation process is identical to installing from the User Software CD.

Setting up the Fiery XJ as a PostScript printer

To set up the Fiery XJ as a PostScript printer, you need a PostScript printer driver and the appropriate Fiery XJ PPD file.

- For Windows 95, install the Adobe PostScript printer driver included with the Fiery XJ user software and the Fiery XJ PPD. The driver is capable of providing access to all Fiery XJ features and supporting PostScript 3.
- For Windows NT 4.0 systems, install the printer driver that came with your Windows system software and the Fiery XJ PPD. This driver may not support all Fiery XJ features.

The following procedures are specific to each version of Windows.

Setting up PostScript printing with Windows 95

You can use the following procedure whether you are installing from the User Software CD or with installer files downloaded using the Installer WebTool.

NOTE: If you have problems setting up the Fiery XJ, install another PostScript printer such as the Apple LaserWriter, and then install the Fiery XJ.

3 Setting up the Fiery XJ as a PostScript printer

TO INSTALL THE ADOBE POSTSCRIPT PRINTER DRIVER FOR WINDOWS 95:

1. If you are installing from the CD, insert it into the CD-ROM drive and double-click the icon of the CD.

If you are installing from the files you downloaded using the Installer WebTool, double-click the icon of your hard disk drive.

2. If you are installing from the CD, open the English\Instalrs\Ps_drvr folders.

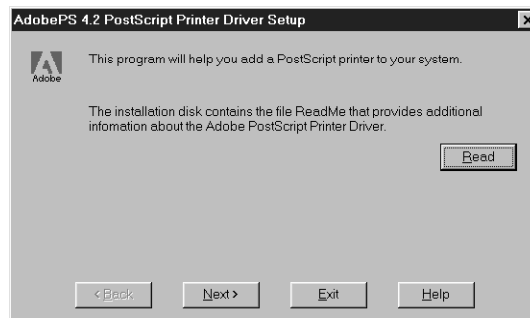
If you are installing from the files you downloaded using the Installer WebTool, open the Prntdrv\Ps_drvr folders on your hard disk.

3. Open the Win_95 folder, and double-click the Setup.exe icon.

4. Read the End User License Agreement. If you agree with the terms and conditions of the agreement, click Accept.

You must click Accept before setup can continue. If you click Decline, you are prompted to either continue with setup or exit.

5. Click Read to view the README file. When you are finished, close the README file and click Next.



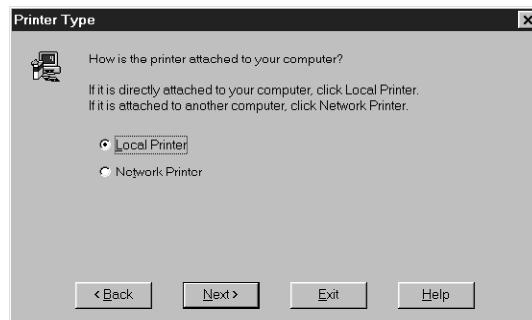
The information in this file is not specific to your Fiery XJ. You can click Next to postpone reading this file and read it later.

6. If you are installing from the CD, you may see an Install Setup Program dialog box offering you the option to copy the setup program to your hard disk. Make your choice and then click Next.

4 Installing User Software on a Windows Computer

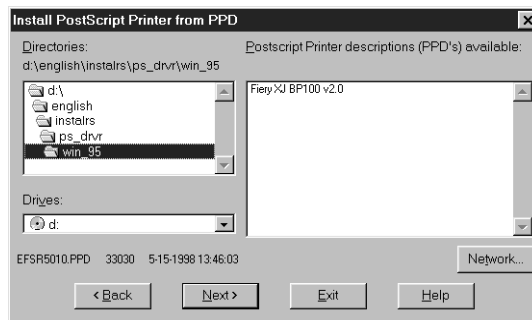
7. In the Printer Type dialog box, select Local Printer and click Next.

This is a general installation. You can modify the attachment later, according to your network type.



8. If you are installing from the CD, in the Directories box, open the English\Instalrs\Ps_drvr\Win_95 folders.

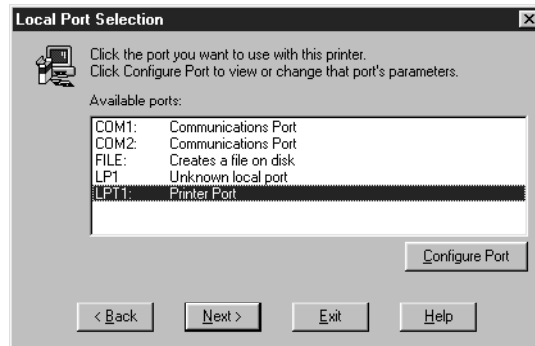
If you are installing from the installer files you downloaded with the Installer WebTool, in the Directories box, open the Prntdrv\Ps_drvr\Win_95 folders.



9. The Fiery XJ PPD appears in the Postscript Printer descriptions (PPD's) available box. Select the Fiery XJ PPD file for your copier and click Next.

5 | Setting up the Fiery XJ as a PostScript printer

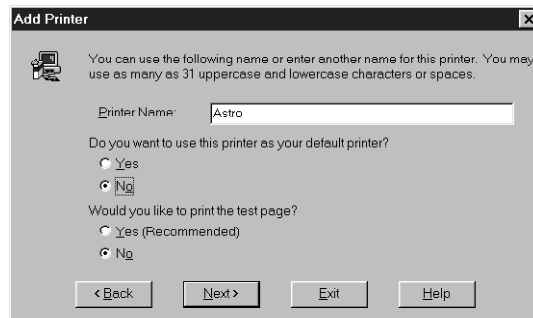
10. In the Available ports box, select the LPT1 port and click Next.
You will configure the port later, according to your network type.



11. Using a maximum of 20 characters, enter a name for the Fiery XJ (or leave the default name) in the Printer Name box.

This name will be used in the Printers and queue windows.

NOTE: Entering more than 20 characters may cause printing problems with some network applications.



12. If you want the Fiery XJ to be the default printer, select Yes; if not, select No.

13. Select No to printing the test page and click Next.

You will print the test page after you finish configuring the printer.

The necessary files are installed to your hard disk. When installation is complete, the Properties dialog box appears.

14. Click OK.

You are notified that Setup is complete.

15. Click Exit.

You are ready for the instructions for connecting to your network type (see “Completing the Windows 95 connection” below).

Completing the Windows 95 connection

To print from Windows 95 you need to:

- Set up network servers, if any
- Set up the Fiery XJ to accept print jobs from your computer
- Configure a port on each Windows 95 computer for the network or connection type

For this type of connection:	See:
Parallel	below
IPX/SPX	page 10
IPX (Novell)	page 12
SMB printing	page 13

Completing the Windows 95 parallel port connection

Preparing a parallel port connection for Windows 95 requires specific BIOS settings on your computer, and specific port and printer settings for Windows 95. In addition, a change to one of the Fiery XJ Setup settings may be required if you choose to spool files to the Fiery XJ rather than print directly.

TO PREPARE THE FIERY XJ AND YOUR COMPUTER FOR PARALLEL PORT PRINTING:

1. Connect the Fiery XJ to the parallel port on your computer.
For instructions, see the *Administrator Guide*.
2. In Network Setup>Port Setup>Parallel Port Setup, set Enable Parallel Port to Yes.
For more information about Fiery XJ Setup, see the *Administrator Guide*.

7 | Setting up the Fiery XJ as a PostScript printer

3. If you want to spool files to the Fiery XJ, set Port Timeout in Seconds to 10. If you want to print directly to the Fiery XJ, set Port Timeout in Seconds to 5. Setting this option to 10 seconds ensures that spooling is not interrupted due to timeout.
4. In your computer's BIOS settings, set Parallel Port Mode to Compatible. To access the BIOS settings, restart the computer and press the key indicated on your monitor as soon as the computer starts up. You may have to scroll through several screens to reach the parallel port settings. After setting the Parallel Port Mode to Compatible, save your changed setting and exit.

TO PREPARE THE PRINTER FOR PARALLEL PORT PRINTING:

1. Click the Start button, point to Settings, and click Printers.
2. Click the Fiery XJ printer icon and choose Properties from the File menu.
3. Click the Details tab, and in the "Print to the following port:" menu, select LPT1: (Printer Port).

NOTE: Check this selection carefully. It may read LPT1: (ECP Printer Port), which is *not* equivalent to LPT1: (Printer Port).

If this box does *not* read LPT1: (Printer Port), change the port setting now, as described in "To prepare the port for parallel port printing:" on page 8, and then return to this procedure. You may need your Windows 95 system CD.

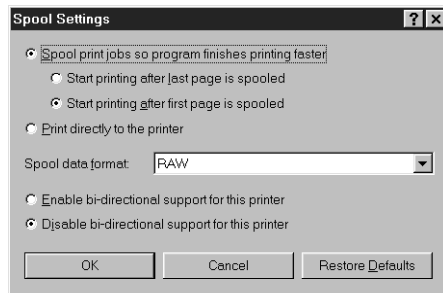
4. If you changed the selection in the "Print to the following port:" menu, click Apply. A Warning dialog box may appear, stating that fonts you downloaded to the previously selected port may be lost; click OK.
5. Click Spool Settings.
6. Select either "Spool print jobs so program finishes printing faster" or "Print directly to the printer."

The selection you make depends on the action you took in step 3 on page 7:

- If you set the Port Timeout in Seconds to 10, you can select either option; however, spooling is faster.

8 Installing User Software on a Windows Computer

- If you set the Port Timeout in Seconds to 5, select “Print directly to the printer.”



7. Select “Disable bi-directional support for this printer” and click OK.
8. Click Apply.
You are now ready to print from your applications to the Fiery XJ with the parallel port. To confirm the connection, print a Windows 95 test page.
9. Click the General tab.
10. Click Print Test Page.
11. The Job Notes window appears. Enter user and job identification information for accounting purposes, or whatever information is required at your site, and click OK.

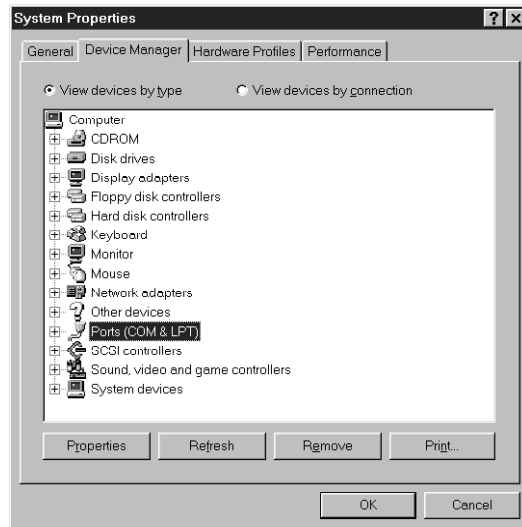
Perform the following procedure only if the LPT1 port is *not* currently set to Printer Port.

TO PREPARE THE PORT FOR PARALLEL PORT PRINTING:

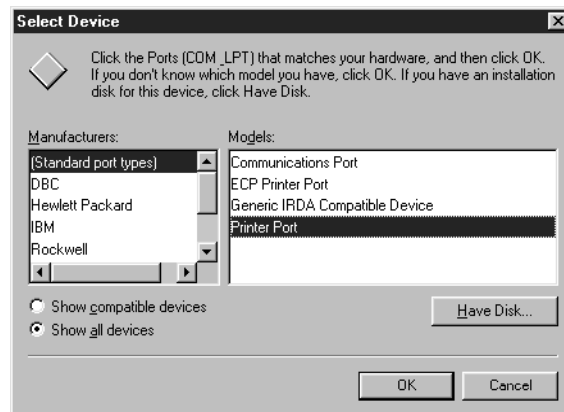
1. Click the Start button, point to Settings, and click Control Panel.
2. Double-click System.
The System Properties window appears.
3. Click the Device Manager tab.

9 Setting up the Fiery XJ as a PostScript printer

4. Double-click Ports.



5. Double-click the port with (LPT1) in its name.
6. In the (LPT1) Properties dialog box click the Driver tab and then click Change Driver.
7. Select Show all devices.
8. From the Manufacturers list, select "(Standard port types)". From the Models list, select "Printer Port" (not ECP Printer Port). Click OK.



10 | Installing User Software on a Windows Computer

9. Click OK in the (LPT1) Properties dialog box.

NOTE: You might need to insert the Windows 95 system CD to complete this step depending on whether the required files are on your hard disk.

10. When prompted to restart the computer, click Yes.

After Windows 95 restarts, you can complete the procedure described in “To prepare the printer for parallel port printing:” on page 7.

Completing the Windows 95 IPX/SPX or IPX (Novell) connection

If you are printing through a Novell server, the Novell network and file server should be set up before you begin. The file server should be configured with a print server and print connection for the Fiery XJ. For details see your NetWare documentation and the *Administrator Guide*.

You can also use Fiery Downloader to print directly to the Fiery XJ from Windows 95 with IPX/SPX.

TO SET UP IPX/SPX PRINTING:

1. Open the Windows 95 Control Panel.
2. Double-click the Network icon.

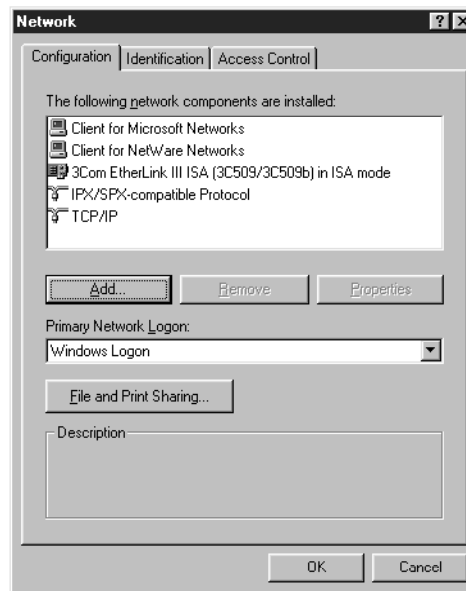
Make sure that IPX/SPX-compatible Protocol and TCP/IP protocol are both listed in the Installed Network Components section.

For instructions, see your Windows 95 documentation.

NOTE: You must enable TCP/IP printing to ensure that all files required for IPX/SPX will be installed. You can select it and click Remove after you set up IPX/SPX if you do not need to use the TCP/IP protocol.

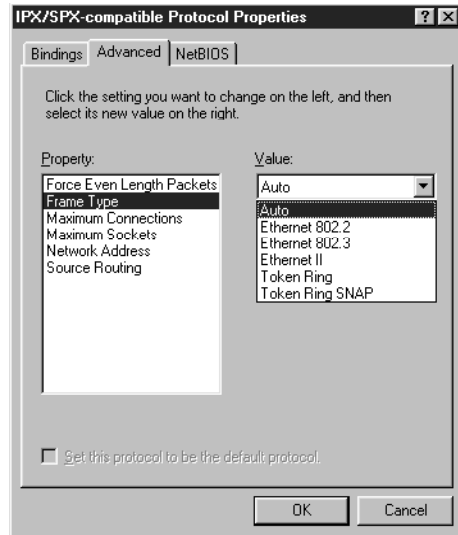
11 | Setting up the Fiery XJ as a PostScript printer

3. Double-click the IPX/SPX-compatible Protocol icon.



4. Click the Advanced tab.
5. In the Property list, click Frame Type. In the Value pop-up menu, select the Frame Type that corresponds to the one set during Fiery XJ Network Setup and click OK. If necessary, print the Configuration page from the Control Panel to check which Frame Type(s) are configured.

NOTE: Do not select Auto. Doing so may not select the Frame Type specified on the Fiery XJ.



6. In the Network Control Panel, click OK.
The System Setting Change dialog box appears, prompting you to restart your computer.
7. Click Yes to save the settings.

TO SET UP IPX (NOVELL) PRINTING WITH WINDOWS 95:

1. Click the Start button, choose Settings, and then choose Printers.
2. Click the Fiery XJ icon, and choose Properties from the File menu (or right-click the icon and left-click Properties).
3. Click the Details tab and click Add Port.
A list of connection options is displayed.
4. In the Add Port dialog box, specify the network path, or click Browse for a display of your network environment.
5. If you are using a NetWare file server, double-click the icon of the NetWare file server you want to use for printing to the Fiery XJ and click OK.

6. Click the printer icon labeled with the NetWare print queue you will use and click OK.
7. In the Add Port dialog box, verify that the network path is updated and click OK.
You are ready to print from the workstation.
Your print jobs are transmitted to the specified print queue on the Novell file server. The Fiery XJ polls the file server, and if jobs are present, they are transmitted to the Fiery XJ.
To confirm the connection, you can print a Windows 95 test page.
8. Click the General tab, click Apply, then click Print Test Page.
9. The Job Notes window appears. Enter user and job identification information for accounting purposes, or whatever information is required at your site, and click OK.

Completing the SMB printing connection

If you don't have a Novell network, you can print via SMB printing (also known as Windows printing or WINS printing). Printing by this method allows you to print from your computer to a particular print connection (Print, or Direct) on the Fiery XJ.

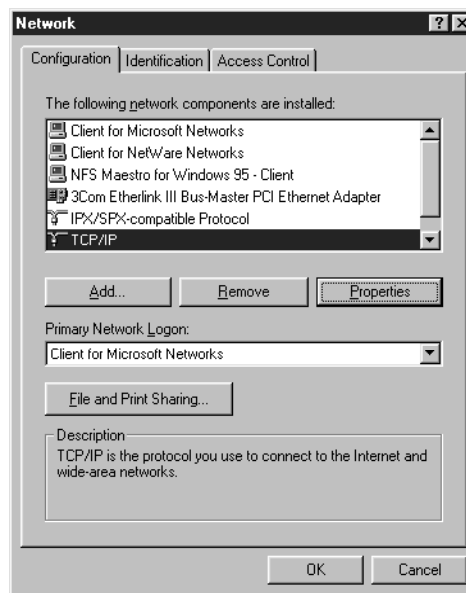
To set up printing to a second print connection, you must install a new printer for each connection and repeat the procedure "To set up SMB printing:" on page 15. If you install more than one printer, give each a descriptive name during printer driver installation, such as Astro-Print, so you can easily identify printers.

BEFORE YOU BEGIN:

1. Configure the Fiery XJ for SMB printing in Network Setup>Service Setup>Windows Setup.
SMB printing is referred to as Windows Printing in Setup, on the Control Panel Map, and on the Configuration page. For more information, see the *Administrator Guide*.
2. Print the Fiery XJ Configuration page.
You need information from the Configuration page to specify settings on your computer, such as the Server Name and IP address of the WINS Name Server.
3. Save any documents in open programs.
You are prompted to restart Windows after this procedure, so be sure to save any documents.

TO PREPARE YOUR COMPUTER FOR SMB PRINTING:

1. Click Start, choose Settings, and click Control Panel.
2. Double-click the Network icon.
3. Select TCP/IP and click Properties.

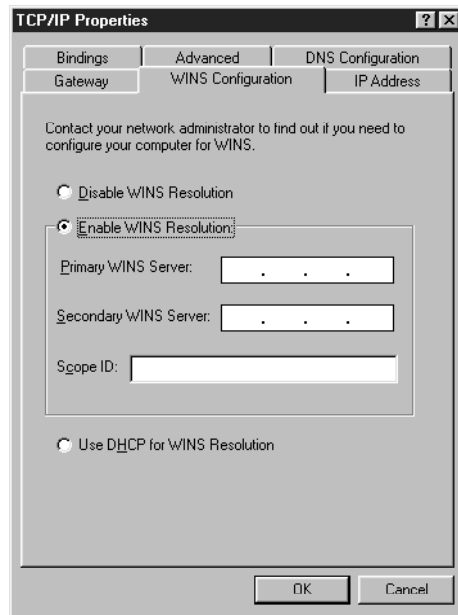


4. Click the WINS Configuration tab.

15 | Setting up the Fiery XJ as a PostScript printer

5. Select "Enable WINS Resolution" and enter the TCP/IP address of the WINS Name Server.

The TCP/IP address of the WINS Name Server is listed on the Configuration Page in the Network Setup section.



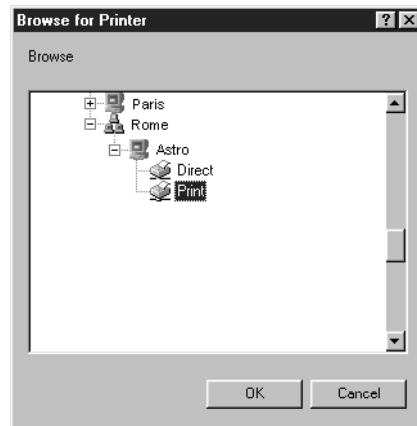
6. Click OK, and click OK at the Network dialog box.

You are prompted to restart Windows. Click Yes, and when Windows restarts, continue with the following procedure.

TO SET UP SMB PRINTING:

1. Click the Start button, choose Settings, and click Printers.
2. Click the icon for the printer and choose Properties from the File menu.
3. Click the Details tab in the Properties window and click Add Port.

4. In the Add Port dialog box, click Browse to display your network environment.
5. Expand the levels to locate your printer and the print connection to which you want to print.



The printer name you are browsing for is the Server Name listed under Network Setup on the Configuration Page. This name may not be the same as the Server Name listed under Server Setup on the Configuration Page (which is the name displayed on the Control Panel).

The network environment and the amount of network traffic determines the amount of time required for the Browse function.

6. Select the print connection under the printer and click OK.
7. In the Add Port dialog box, verify that the network path is correct and click OK.
8. To confirm the connection, click the General tab in the Properties dialog box.
9. Click Apply, then click Print Test Page.
10. The Job Notes window appears. Enter user and job identification information for accounting purposes, or whatever information is required at your site, and click OK.

If the test page prints successfully, you are ready to print from the computer.

Setting up PostScript printing with Windows NT 4.0

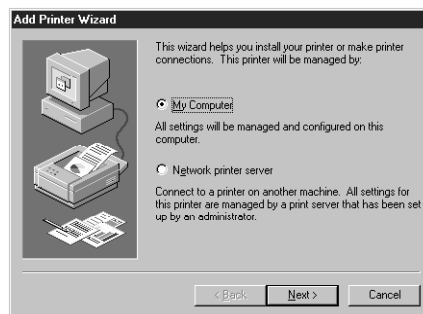
To set up Windows NT 4.0 printing, install the Windows NT PostScript printer driver and configure printing for your network type. Fiery XJ printer files support Intel-based Windows NT 4.0.

Some features of the Fiery XJ may not be available when using the Windows NT PostScript printer driver. For details, see the *User Guide*.

You can use the following procedure whether you are installing from the User Software CD or with installer files downloaded using the Installer WebTool.

TO INSTALL THE FIERY XJ PPD AS A LOCAL PRINTER WITH THE WINDOWS NT 4.0 POSTSCRIPT PRINTER DRIVER:

1. If you are installing from the CD, insert it into the CD-ROM drive.
2. Click Start in the Windows NT taskbar, choose Settings, and then choose Printers.
3. Double-click Add Printer.
4. To install a printer locally, select My Computer and click Next.

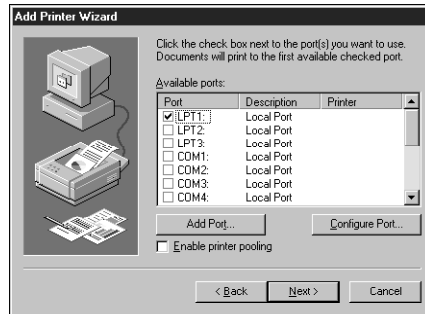


“My Computer” is available if you logged in to a computer on which you have Administrator privileges. If it is not available, you can add a network printer. The procedure is similar to adding a port (see page 24).

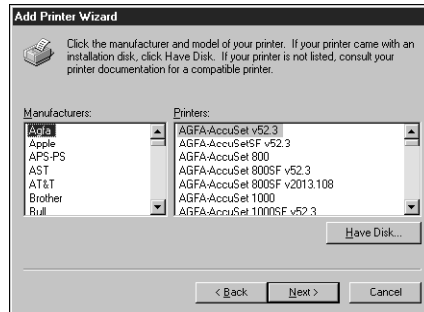
18 | Installing User Software on a Windows Computer

5. Check LPT1: and click Next.

This is a general installation that works for the parallel port connection. You can add a network port later, according to your network type.



6. In the dialog box displaying lists of manufacturers and printers, click Have Disk.



The Install from Disk dialog box prompts you for the disk.



19 | Setting up the Fiery XJ as a PostScript printer

7. If you are installing from the CD, type the name of the CD-ROM drive (for example, D:\), and click Browse.

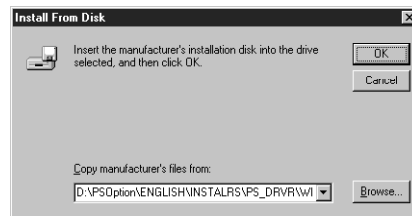
If you are installing from the installer files you downloaded with the Installer WebTool, type the name of your hard disk drive (for example, C:\), and click Browse.

8. If you are installing from the CD, browse to the English\Instalrs\Ps_drvr\WIN_NT4x folder and click Open.

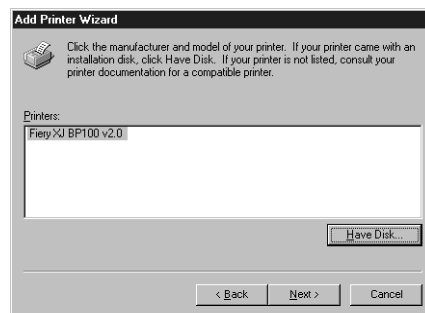
If you are installing from the installer files you downloaded with the Installer WebTool, browse to the Prntdrv\Ps_drvr\WIN_NT4x folder and click Open.

Make sure "Ntprint.inf" is selected in the Look in box. The path is copied to the Install from Disk dialog box.

9. Verify the path is correct, and click OK.

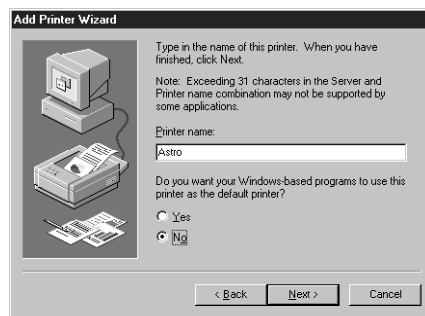


10. In the Printers box, select the Fiery XJ PPD file and click Next.

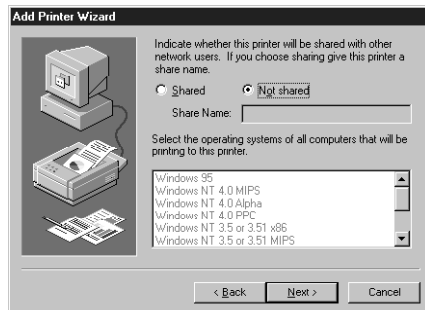


11. Using a maximum of 20 characters, enter a name for the Fiery XJ (or leave the default name) in the Printer name box, and choose whether you want the Fiery XJ to be your default printer. Click Next.

NOTE: Entering more than 20 characters may cause printing problems with some network applications.



12. Indicate whether you want the printer installed as a shared printer. Click Next.

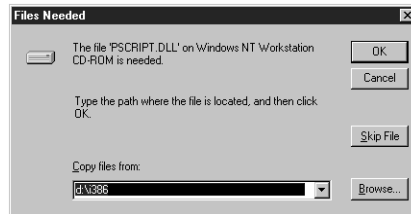


If you select Shared, you must also enter a Share Name for the printer (or leave the default name) and make selections from the list of operating systems used by client workstations. For information on shared printers, see the *Administrator Guide*.

13. Click No in the next dialog box to postpone printing a test page, and click Finish.

TO COMPLETE INSTALLATION OF THE FIERY XJ WITH THE WINDOWS NT 4.0 POSTSCRIPT PRINTER DRIVER:

If the Files Needed dialog box appears, it prompts you to locate the Pscript.dll file.



1. If this is the first PostScript printer on your system:

- Eject the User Software CD and insert the Windows NT Installation CD.
- In the text field, type the name of the CD-ROM drive (for example, D:\), and click Browse.
- Browse to i386 (the folder containing the Pscript.dll file).

If you have already installed a PostScript printer on your system:

- In the text field, type the name of the hard drive (for example, C:\), and click Browse.
- Browse to winnt40\system32\spool\drivers\w32x86 (the folder containing the PostScript driver).

2. Click Open, then click OK in the Files Needed dialog box.

When installation is complete, the Printers window appears with an icon for the newly installed printer.

3. Complete the printer connection according to your network type.

To do this:	See:
Configure the parallel connection	“Completing the Windows NT 4.0 parallel port connection” below
Configure the TCP/IP (lpr port) connection	“Completing the Windows NT 4.0 TCP/IP connection” on page 23
Configure the IPX (Novell) connection	“Completing the Windows NT 4.0 IPX (Novell) connection” on page 25

Completing the Windows NT 4.0 printer connection

To print from Windows NT 4.0 you need to:

- Set up network servers, if any
- Set up the Fiery XJ to accept print jobs from your computer
- Configure a port on each Windows NT computer for the network or connection type

Completing the Windows NT 4.0 parallel port connection

The parallel port cable connects the Fiery XJ to a single computer. Once you have installed the Windows NT PostScript printer driver and the Fiery XJ PPD, complete the setup for parallel port printing.

TO SET UP PARALLEL PRINTING FOR WINDOWS NT 4.0:

1. Click the Start button, choose Settings, and then choose Printers.
2. Double-click the Fiery XJ icon and choose Properties from the Printer menu.
In the Ports tab, confirm that LPT1 (Local Port) is checked.
The Fiery XJ is ready to accept parallel print jobs from your computer, using the Windows NT PostScript printer driver and the Fiery XJ PPD.
3. Click the General tab and click Print Test Page.
When you select print, your files are transmitted over the parallel port connection to the Fiery XJ.
4. Click the Sharing tab if you want to share the Fiery XJ with network users. Select Shared, and select a share name.
Select the operating system or systems used by your network clients if you want to install a printer driver that those clients can download.
5. Click OK to exit the Printer Properties dialog box.

Completing the Windows NT 4.0 TCP/IP connection

Once you have installed the Windows NT 4.0 PostScript printer driver and the Fiery XJ PPD, complete the setup for the TCP/IP and lpr connection as follows:

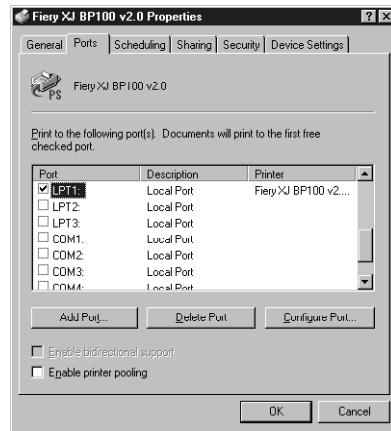
- Prepare the Fiery XJ to accept print jobs using TCP/IP and lpr protocols. (For details, see the *Administrator Guide*.)
- Configure the workstation for the TCP/IP connection.

Before you continue, ask the system administrator for the IP address assigned to the Fiery XJ, as well as the subnet mask and the gateway address, if they are used.

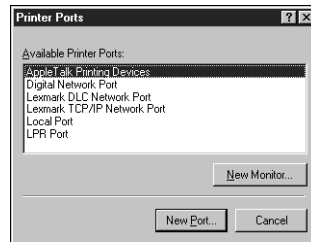
The TCP/IP Protocol and Microsoft TCP/IP Printing software should already be installed on the Windows NT workstation.

TO SET UP TCP/IP AND LPR PRINTING FOR WINDOWS NT 4.0:

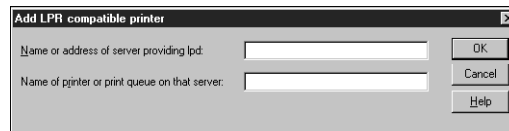
1. Open the Properties dialog box for the Fiery XJ, and click the Ports tab.



2. Click Add Port.
The available port types are displayed.



3. Select LPR Port and click New Port.
If the LPR port is not listed, install the TCP/IP protocols. See the *Administrator Guide* or your Windows NT documentation.
4. Enter the IP address of the Fiery XJ.



If your network uses Domain Name Services (DNS), enter the DNS name assigned to the Fiery XJ instead of the IP address.

5. Press **Tab** and type the internal name of the Fiery XJ.

This name can be simply the print queue name or it can be of the form `queue_devicename`. The name must be one of the following:

`print`
`print_r2`

NOTE: This name is case-sensitive; type it *exactly* as shown above.

6. Click **OK**.

The workstation checks the address or DNS name you entered and notifies you if it cannot resolve the address.

7. Click **Close** in the **Printer Ports** dialog box.

The new port configuration is reflected in the **Ports** tab. You should now print a test page to verify the connection.

8. Click the **General** tab and click **Print Test Page**.

When you print, your PostScript files are transmitted over the LPR Port connection to the Fiery XJ.

9. Click **OK** to close the **Printer Properties** dialog box.

Completing the Windows NT 4.0 IPX (Novell) connection

Complete the setup for the IPX (Novell) connection as follows:

- Configure the Novell network and file server for handling Fiery XJ print jobs

The file server should be configured with a print server and print connection for the Fiery XJ. For details, see your NetWare documentation.

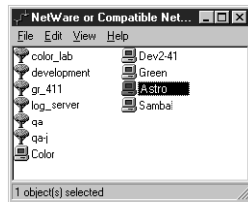
- Prepare the Fiery XJ for IPX printing
- Set up the IPX connection on the workstation

NetWare protocols (NWLink IPX/SPX Compatible Transport) and NetWare client services should already be installed on the Windows NT workstation.

To SET UP IPX (NOVELL) PRINTING FOR WINDOWS NT 4.0:

1. Double-click Network Neighborhood.
2. Double-click NetWare or Compatible Network.

A list of NetWare servers is displayed.

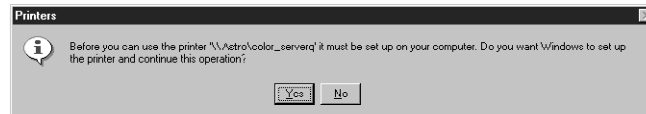


3. Double-click the NetWare Tree or File Server on which the network administrator defined a print connection for the Fiery XJ.

You may have to log in to the file server as a guest to see the print connections.

4. Double-click the print connection defined for the Fiery XJ.

If the NetWare server does not have a suitable driver for the Fiery XJ you may be asked if you want to set up the printer on your workstation.



5. Click Yes.
6. Specify if you print from MS-DOS programs and click Next.

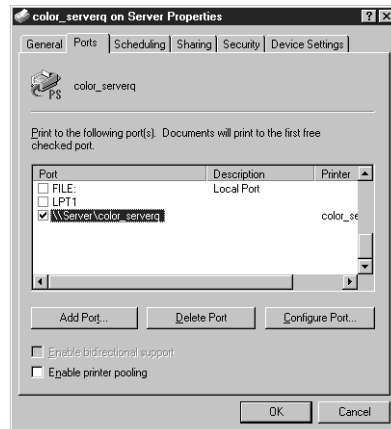
If you select Yes, you will need to capture a printer port before continuing.

7. Install the Fiery XJ PPD (start with step 6 on page 18).

When installation is complete, a new printer window appears, with the name of the print queue on the NetWare server.

8. Choose Properties from the Printer menu and click the Ports tab.

The NetWare queue you just connected to is listed and checked as a port for the Fiery XJ.



9. Click the General tab and click Print Test Page.

The Fiery XJ polls the NetWare server for print jobs in the print connection defined for the Fiery XJ. When you print, your PostScript files are spooled to that connection and transmitted over the queue "port" to the Fiery XJ.

The test page job is listed in the queue window until it is printed.

Installing Fiery XJ software

The User Software CD includes software for the Fiery Downloader and the Fiery Spooler. These client utilities must be separately installed on each client computer that will use them.

NOTE: Windows versions of client utilities are supported for Windows 95 and Windows NT 4.0 only.

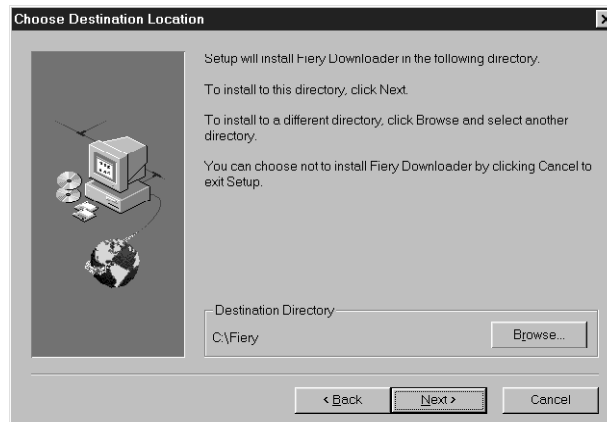
Fiery Downloader

Before you begin the installation, determine the following:

- Where do you want to install Fiery Downloader on your hard disk?
By default, the installer places Fiery Downloader in a folder named “Fiery,” on the top level of your hard disk.
- What do you want to name Fiery Downloader folder in the Windows\Start Menu\Programs folder?
By default, the installer names the folder “Fiery.”

TO INSTALL FIERY DOWNLOADER:

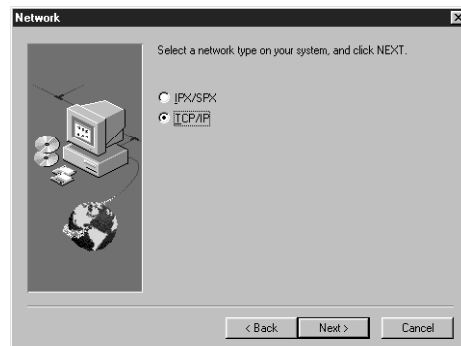
1. On the User Software CD, browse to the English\Instalrs\Download\Disk1 folder.
2. Double-click the Setup.exe icon.
3. Click Next in the Welcome dialog box.
4. In the Choose Destination Location dialog box, click Next to install the Fiery Downloader in the default folder, or click Browse to select a different folder, and then click Next.



5. In the Select Program Folder dialog box, click Next to install Fiery Downloader into the default Program Folder, or specify a different folder name, and then click Next.



6. In the Network dialog box, specify the network type on your system and then click Next.



For Windows 95, select IPX/SPX. For Windows NT 4.0, select TCP/IP.

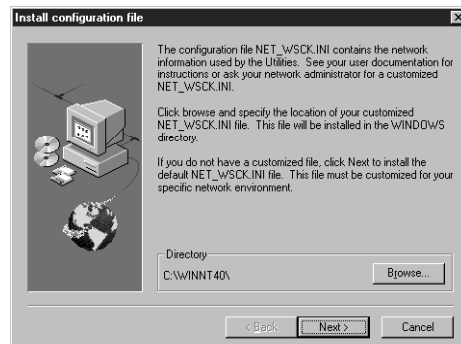
7. In the Start Copying File dialog box, verify the information and then click Next.



Several files are copied to your hard disk.

8. In the Install Configuration File dialog box, browse to the location of the NET_WSCK.INI file that has been customized for your site.

If you do not have a customized NET_WSCK.INI file, you can use the default file.



9. Click OK when you are informed that installation is complete.

Fiery Spooler

The Fiery Spooler installer installs the utility itself as well as Java files necessary to use the utility. Before you begin this installation, determine the following:

- Where do you want to install Fiery Spooler on your hard disk?

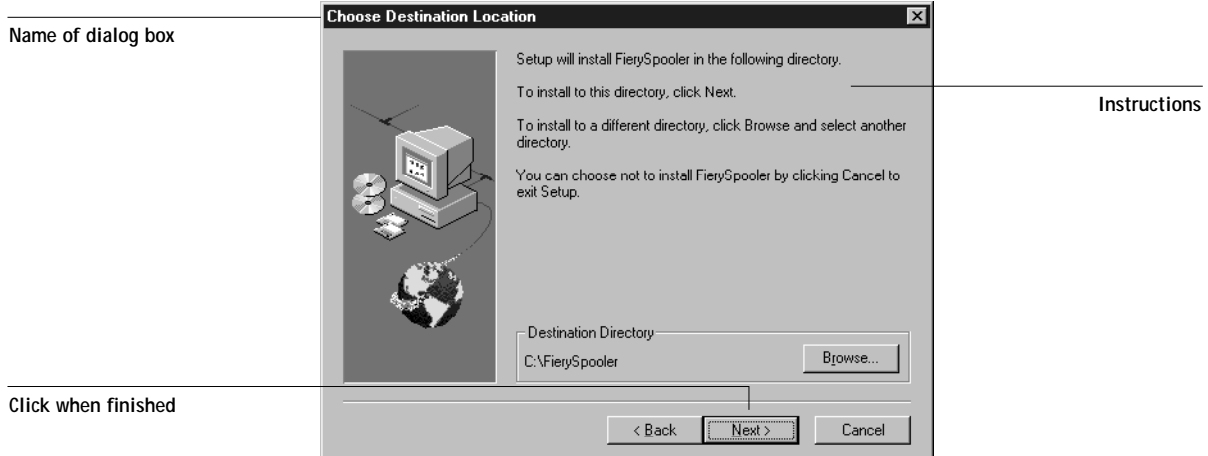
By default, the installer places Fiery Spooler in a folder named “FierySpooler” on the top level of your hard disk.

- What do you want to name the Fiery Spooler folder in the Windows\Start Menu\Programs folder?

By default, the installer names the folder “FierySpooler.”

TO INSTALL FIERY SPOOLER:

1. On the User Software CD, double-click to open the English\Instalrs\Spooler\Disk1 folders.
2. Double-click the Setup.exe icon.
3. Follow the instructions in the Setup dialog boxes to complete installation of Fiery Spooler.



Use the table below as a guide when installing Fiery Spooler. For specific instructions, read the information in each dialog box.

Name of dialog box:	Action:	When finished:
Welcome	Read the Setup program introduction.	Click Next.
Choose Destination Location	Specify a hard disk location for the installed utility software.	Click Next.

Name of dialog box:	Action:	When finished:
Select Program Folder	Specify a folder name for the utility software located in the Programs menu.	Click Next.
Start Copying Files	Verify the information in the Current Settings area.	Click Next.
Java (TM) Support	Indicate whether you want to install Java files onto your hard disk. These files may be necessary for using Fiery Spooler. If Internet Explorer v4.01 or later is installed on this workstation, click No, otherwise, click Yes.	Click Yes or No.
Java (TM) Support	Read the License Agreement.	Click Yes.
Java (TM) Support	Acknowledge that the installation of Java files is complete.	Click OK.
Java (TM) Support	Indicate that you want to restart your computer in order to use the Fiery Spooler software.	Click Yes.

Using the software for the first time

Before you can use the newly installed software, you must properly configure the connection to the Fiery XJ.

Configuring the connection for Fiery Downloader

The first time you use Fiery Downloader, you are prompted to configure the connection to the Fiery XJ. The procedure for configuring the connection with Fiery Spooler is different and is described on page 35.

BEFORE YOU BEGIN:

- If you are using IPX/SPX, print the Configuration page from the Control Panel and note the IPX address and Server Name (in Server Setup) for the Fiery XJ.

In general, you should use the Ethernet IPX address. If you are connected through a Token Ring network, use the Token Ring IPX address.

- If you are using TCP/IP, print the Configuration page from the Control Panel and note the IP Address of the Fiery XJ.

You can also set up a Domain Name Server (DNS) for the IP address of the Fiery XJ in the printcap file and use that name. See your Windows system documentation for information.

TO CONFIGURE THE CONNECTION TO THE FIERY XJ:

1. Launch Fiery Downloader by double-clicking its icon or by choosing it from the Start>Programs menu.
2. Click OK.



3. Enter the appropriate information for the Fiery XJ.

Server Name—If you are using the TCP/IP protocol, enter the IP address (or DNS name) of the Fiery XJ. If you are using the IPX protocol, enter the actual Server Name of the Fiery XJ as it was defined during Server Setup. This entry is case sensitive.

IPX Address—(This area is enabled only if you selected IPX/SPX as your network protocol during the installation.) Enter the IPX Address of the Fiery XJ.

New Device—Enter the name of the device that the Fiery XJ is connected to: r2. This device name appears in the Printer Setup section of the Configuration page.

For TCP/IP Networks

For IPX/SPX Networks

4. When you have entered all the information, click **Add**.
5. With the device name (r2) selected in the **Devices** list, click **OK**.

The Fiery XJ appears in the list of available servers. The entry displays the server name followed by the device name.

6. With the Fiery XJ selected in the list of available servers, click **OK** to begin using the software.

Modifying the configuration

You should edit the configuration whenever there is any change to your Fiery XJserver or network, such as a Server Name, IP Address/IPX Address, or device change. First change the specific Fiery XJ Setup information before configuring the connection.

TO MODIFY THE CONFIGURATION:

1. In the Chooser dialog box, click **Configure**.
2. To edit information for a Fiery XJ, select the Fiery XJ by its IP address or DNS name and click **Modify**. Edit information in the **Modify Server Settings** dialog box as necessary, and click **OK** when finished.
3. To add a new Fiery XJ to the list of available servers, click **Add**. Configure the **Add New Server** dialog box as outlined in step 3 through step 5 above.
4. To remove a Fiery XJ from the list of available servers, select the Fiery XJ by its IP address or DNS name and click **Remove**; then click **Yes** in the **Remove** dialog box.
5. Click **Close** in the **Configure** dialog box.

Configuring the connection for Fiery Spooler

The first time you launch Fiery Spooler, you are prompted to configure a connection to the Fiery XJ. This configuration procedure is different from that for Fiery Downloader.

NOTE: Fiery Spooler for Windows 95 and Windows NT 4.0 requires the TCP/IP network protocol.

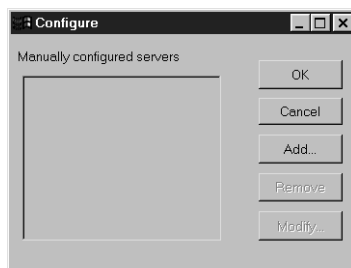
TO CONFIGURE THE CONNECTION FOR FIERY SPOOLER:

1. Launch Fiery Spooler by double-clicking its icon or by choosing it from the **Start\Programs** menu.

2. Click Option.



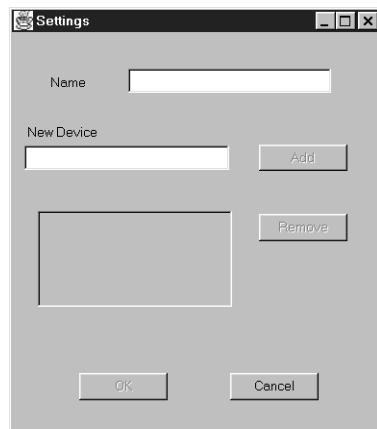
3. Click Add.



4. Enter the appropriate information for the Fiery XJ.

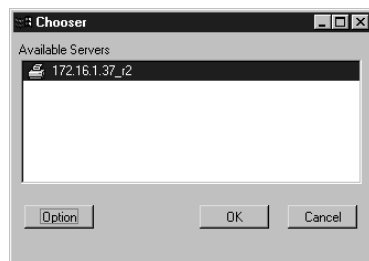
Name—Enter the IP address (or DNS name) of the Fiery XJ.

New Device—Enter the name of the device that the Fiery XJ is connected to: r2. This device name appears in the Printer Setup section of the Configuration page.



37 | Using the software for the first time

5. When you have entered all the information, click Add.
6. With the device name (r2) selected, click OK.
The Fiery XJ appears in a list of configured servers.
7. Click OK in the Configure dialog box.
The Fiery XJ appears in a list of available servers.



8. With the Fiery XJ selected in the list of available servers, click OK to begin using Fiery Spooler.

Modifying the configuration

You should edit the configuration whenever there is any change to your Fiery XJ or network, such as an IP Address or device change. First change the specific Fiery XJ Setup information before configuring the connection.

TO MODIFY THE CONFIGURATION:

1. In the Chooser dialog box, click Option.
2. To edit information for a Fiery XJ, select the Fiery XJ by its IP address or DNS name and click Modify. Edit information in the Settings dialog box as necessary, and click OK when finished.
3. To add a new Fiery XJ, click Add. Configure the Settings dialog box as outlined in step 4 through step 6 above.
4. To remove a Fiery XJ, select the Fiery XJ by its IP address or DNS name and click Remove.
5. Click OK in the Configure dialog box.
The list of available servers reflects the modifications you have made.

Copying color files from the User Software CD

You can copy additional color files from the User Software CD to your hard disk. For more information on how to use these files, see the *User Guide*.

Color folder Contains the Calib folder which holds a downloadable file to perform AutCal Letter Mode Calibration, and the Simulate folder which holds three downloadable files that allow you to change the CMYK Simulation setting to SWOP-Coated, DIC, or Euroscale. The Fiery XJ is shipped with SWOP-Coated as the default simulation.

Installing User Software on a Mac OS Computer

The general steps for installing the Fiery XJ user software and setting up printing on a Mac OS-based computer are:

- Install the Adobe PostScript printer driver and Fiery XJ PostScript Printer Description file (PPD).
- Set up the Fiery XJ in the Chooser.
- Install the Fiery utilities (Fiery Downloader and Fiery Spooler).
- Install screen fonts

Installing Mac OS software

The Installers folder on the User Software CD contains the following installer folders:

- Fiery Downloader—Fiery Downloader installer
- Fiery Spooler—Fiery Spooler installer
- Printer Driver—Adobe PostScript printer driver and PPD installer

NOTE: An installer is not provided for the Mac OS screen fonts; they must be copied directly from the User Software CD to the System Folder:Fonts folder on your hard disk. For instructions, see “Screen fonts” on page 43.

In addition, the User Software CD includes various color files. These files must be copied or installed from the CD and placed in the appropriate locations on your hard disk (see “Copying color files from the User Software CD” on page 44):

- Calibration file to perform Autocal Letter Mode Calibration
- Three downloadable PostScript files that allow you to change the CMYK Simulation setting to DIC, Euroscale, or back to SWOP-Coated (the initial default)

NOTE: If you operate the Fiery XJ in a copy shop, quick print shop, or service bureau, you might want to provide copies of the printer driver, PPD file, and relevant documentation to customers. This ensures that jobs they prepare are properly formatted for printing to the Fiery XJ.

Setting up PostScript printing with Mac OS

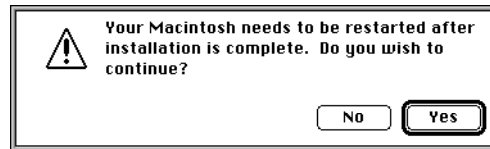
To set up the Fiery XJ as a PostScript printer, you must install the Adobe PostScript printer driver, and the PPD file that corresponds to your copier. The AdobePS printer driver and PPD file are provided on the User Software CD.

Printer drivers provide a way to communicate information on print jobs between your applications, the Fiery XJ, and any other PostScript printer connected to your computer.

TO INSTALL THE ADOBEPS 8.5 PRINTER DRIVER AND PPD FILE:

1. Open the Installers:Printer Driver folder on the User Software CD.
2. Double-click the AdobePS 8.5 Installer icon.

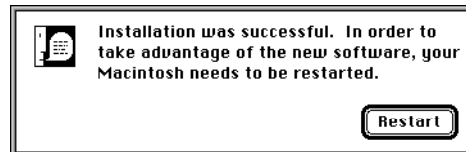
A warning dialog box appears.



3. Click Yes to continue with installation of printer driver software, and to confirm that your computer must be restarted after installation.

The AdobePS Installer installs the Adobe PostScript printer driver, the PPD file that corresponds to your copier, and the Apple Chooser.

4. Click Restart when installation is complete.



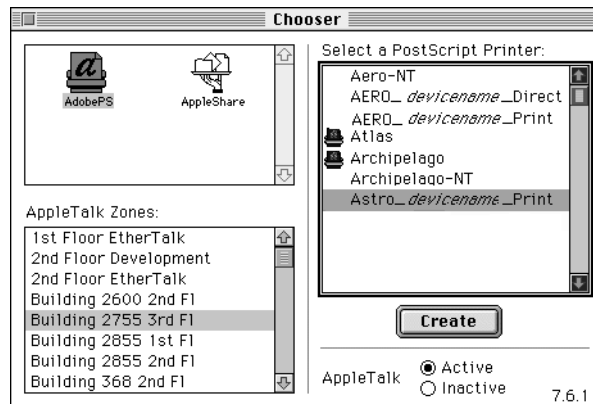
Setting up the Fiery XJ in the Chooser

After you install the AdobePS printer driver and PPD file (see “Setting up PostScript printing with Mac OS” on page 40), you need to set up the Fiery XJ in the Chooser in order to match it with the correct PPD. This section describes how to set up the Fiery XJ with the AdobePS printer driver.

TO SET UP THE FIERY XJ IN THE CHOOSER:

1. Select Chooser from the Apple menu.
2. Click the AdobePS icon.

Make sure AppleTalk is set to Active.



3. Select the correct AppleTalk Zone, if necessary.
4. Select the Fiery XJ from the “Select a PostScript Printer” list, and click Create.

The Fiery XJ appears in the list in the form of <servername>_<devicename>_<printconnection>. The device name (r2) is the model of your copier. The AdobePS printer driver automatically selects the correct PPD file for your Fiery XJ.

NOTE: Only the print connections that are available appear in the Chooser. Each Fiery XJ print connection (Direct and Print) appears as a separate printer, and you must set up each print connection separately. Repeat step 4 for all print connections you wish to use.

5. Close the Chooser.

Installing Fiery XJ software

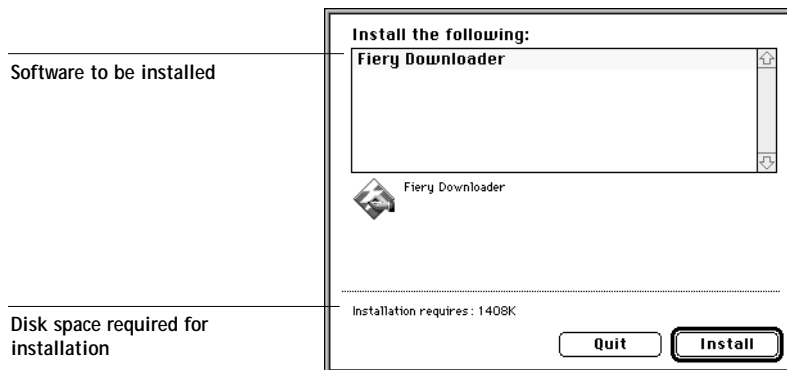
Before you begin each of the following installation procedures, determine where you want to install each item on your hard disk. By default, the files are placed in a folder named “Fiery” on the top level of your hard disk.

TO INSTALL MAC OS SOFTWARE:

1. On the User Software CD or your hard disk, double-click to open the Installers folder.

If you are installing:	Double-click:
Fiery Downloader	To open the Fiery Downloader folder
Fiery Spooler	To open the Fiery Spooler folder

2. Double-click the Installer icon.
3. Click Install.



4. Specify the locations into which to install each item.

Use the table below as a guide when installing software.

If you are installing:	Action:	To install:
Fiery Downloader	Specify a hard disk location for the installed Fiery Downloader software.	Click Install.
Fiery Spooler	Specify a hard disk location for the installed Fiery Spooler software.	Click Install.

5. If prompted, click Quit to close the software installer.

Screen fonts

The User Software CD includes screen fonts that correspond to the 136 built-in PostScript printer fonts on the Fiery XJ. In order to view and use these fonts, you must copy them from the User Software CD to your hard disk.

TO INSTALL SCREEN FONTS:

1. On the User Software CD, open the Fonts folder.
2. Copy the fonts that you want to install to the System Folder:Fonts folder on your hard disk.

If you have any applications open, you must quit and relaunch them before the newly installed screen fonts are available.

Copying color files from the User Software CD

You can copy additional color files from the User Software CD to your hard disk. For more information on how to use these files, see the *User Guide*.

The User Software CD contains the following color files:

Color folder	Contains the Calibration folder which holds a downloadable file to perform AutCal Letter Mode Calibration, and the Simulation folder which holds three downloadable files that allow you to change the CMYK Simulation setting to SWOP-Coated, DIC, or Euroscale. The Fiery XJ is shipped with SWOP-Coated as the default simulation.
--------------	---

Downloading Installers with Fiery WebTools

Fiery WebTools allow you to manage your Fiery XJ remotely from the Internet or from your company's intranet. The Fiery XJ has its own home page, from which you are able to select from a variety of functions including Status, WebSpooler, and Installer.

NOTE: Fiery WebTools are supported for Windows 95 and Windows NT 4.0 only.

For more information on using Fiery WebTools, see the *User Guide*.

Setting up Fiery WebTools

In order for network users to access and use Fiery WebTools, you need to set certain Fiery XJ options in Setup from the Control Panel. You also need to prepare each user's workstation to communicate with the Fiery XJ over the Internet or intranet.

For more information about Fiery XJ Setup, see the *Administrator Guide*.

TO VERIFY THAT FIERY WEBTOOLS ARE SET UP ON THE FIERY XJ:

1. Print the Configuration page from the Control Panel. For instructions, see the *User Guide*.
2. On the Configuration page, check the following:
 - In Network Setup>Port Setup, confirm that the appropriate network type (Ethernet or Token Ring) is enabled.
 - In Network Setup>Protocol Setup>TCP/IP Setup, confirm that TCP/IP is enabled and that there is a valid, unique IP Address for the Fiery XJ.
 - In Network Setup>Service Setup, confirm that Web Services are enabled.
3. If all the conditions listed in Step 2 are currently set, the Fiery XJ is properly set up to use Fiery WebTools.

If any of the conditions listed in Step 2 are not currently set, you must change them (as described in the *Administrator Guide*) before you can use Fiery WebTools.

TO SET UP FIERY WEBTOOLS ON EACH USER'S WORKSTATION:

1. Enable TCP/IP networking.
2. Make sure the workstation has a valid, unique IP address.
3. Make sure the workstation is installed with one of the following Internet browsers:
Either Netscape Communicator v4.0.4 or Microsoft Internet Explorer v4.0.1

NOTE: Netscape and Microsoft continue to release frequent updates to their browsers. As support cannot be guaranteed for all versions, use the versions specified above for best results.

4. Make sure Java is enabled in your Internet browser.

For more information on setting up the Fiery XJ and your network, see the *Administrator Guide*.

Using the Installer WebTool

The Installer WebTool duplicates the printer driver installers on the User Software CD, allowing you to easily download the current version of printer files from the Fiery XJ to your workstation.

TO DOWNLOAD THE PRINTER FILES INSTALLERS WITH THE
INSTALLER WEBTOOL:

1. Launch your Internet or intranet browser and enter the DNS name or IP address of the Fiery XJ.
2. Select a login level, enter a password if necessary, and click OK.

No password is required to log in as Guest. You have full access to the Installer WebTool when logged in as Guest.

47 | Using the Installer WebTool

3. Click the Installer button.



4. Under the name of your operating system, click "Printer Files".
A dialog box appears, prompting you to save the file "Prntdrv.exe" to the location you choose.
5. Browse to the location where you want to save the Prntdrv.exe file and click Save.
6. Double-click the Prntdrv.exe file, browse to the location where you want to install the Prntdrv folder, and click Next.
The Prntdrv folder is installed to the location you specified.
7. Install the appropriate printer files for your operating system.

For instructions on installing the printer files for:	See:
Windows 95	"Setting up PostScript printing with Windows 95" on page 2
Windows NT 4.0	"Setting up PostScript printing with Windows NT 4.0" on page 17

Troubleshooting

This chapter provides troubleshooting tips.

On a Windows computer

Setting up IPX (Novell) printing for Windows NT Workstation

If you have problems installing the Fiery XJ with Windows NT, try installing another PostScript printer (such as the Apple LaserWriter IIg), and then install the Fiery XJ. Installing another printer insures that all files are properly installed and available. For instructions, see your Windows NT documentation.

Installing the Adobe PostScript Printer Driver

If you are reinstalling the Adobe PostScript Printer Driver, delete any previous versions and related files before installing. Search for and delete all files named Efr*. * in the Windows\System folder and the Windows\System\Color folder. See the Adobe README file included with the printer driver for more information.

Problems with the Fiery utilities on Windows 95 or Windows NT

1. If you are using Windows 95, make sure that IPX/SPX and TCP/IP networking protocols are both enabled.
See “Completing the Windows 95 IPX/SPX or IPX (Novell) connection” on page 10.
2. Make sure that the connection is configured correctly for your site.
To check the current configuration, launch a Fiery utility and choose Open from the File menu. Select the Fiery XJ and click Modify to see current settings. If the settings are incorrect, you can change them in this dialog box.

On a Mac OS computer

Setting up the Fiery XJ in the Chooser

If auto-setup does not work and you are prompted to select the PPD, select the Fiery XJ file in your System Folder:Extensions:Printer Descriptions folder.

Index

A

Adobe PostScript 3 fonts xi
Adobe PostScript printer driver, *see* PostScript printer driver
amount of memory required xii, xiii, xiv
AppleTalk x, xiii, 41

B

Berkeley lpd protocol xiv

C

cable, color server x
Chooser
 selecting the server in 41
 setting up color server in 50
client utilities, installing 27, 42
color reference files 38, 44
color server, specifications x
ColorWise color management xi
Configuration page 13, 33
connecting
 Windows 95 by IPX/SPX 10
 Windows 95 by parallel port 6
 Windows 95 by SMB
 Windows NT 4.0 by IPX (Novell) 25
 Windows NT 4.0 by parallel port 22
connection, configuring 32 to 37

D

DB-25 connector xiv
device name 25, 34, 36
DNS name xii
Domain Name Server, *see* DNS name

E

EPS files xi
Ethernet 100BaseT cable x
Ethernet 10BaseT cable x
EtherTalk xiii

F

Fiery Downloader
 EPS files xi
 installer for Mac OS 39
 installer for Windows 1
 installing for Mac OS 43
 installing for Windows 28
 overview xi
Fiery Spooler
 configuring the connection 35 to 37
 installer for Mac OS 39
 installer for Windows 1
 installing for Mac OS 43
 installing for Windows 30
 overview xii
 supported protocol xiii
Fiery utilities
 configuring the connection 32 to 37
 problems on Windows 95 or
 Windows NT 49
 requirements xii
 see also Fiery Downloader, Fiery Spooler
Fiery WebTools
 Installer xi, 2, 19, 46
 setting up 45
 system requirements xii
 version of browser required 46
fonts
 Adobe PostScript 3 xi
 Adobe Type 1 xi
 installing 39
 screen fonts 43
 TrueType xi
Frame Type option 11

I
i386 folder 21
ICM printer profiles 38, 44

installers
 Mac OS 39
 Windows 1, 2
 Installers folder 39
 Installer WebTool, *see* Fiery WebTools
 installing
 Mac OS software 42 to 43
 PostScript printer driver (Mac OS) 40
 PostScript printer driver
 (Windows 95) 3 to 6
 PostScript printer driver
 (Windows NT 4.0) 17
 screen fonts 43
 Windows software 27
 Instalrs folder 1
 internal name 25
 Internet Explorer xii, 46
 IP address xii, 13, 33
 IPX
 system requirements xiv
 Windows 95 12, 13
 Windows NT 4.0 25
 IPX address 33
 IPX/SPX
 configuring the connection 33
 Windows 95 10

J
 Java xii, 46

M
 Mac OS
 installing software 42 to 43
 Power Macintosh requirement xiii
 screen fonts 43
 system requirements xiii
 troubleshooting 50
 memory, amount required xii, xiii, xiv
 modifying the configuration (Windows) 37

N
 Netscape Communicator xii, 46
 NetWare
 client setup 10
 network port 12
 client setup Windows 95 12, 13
 NetWise networking features xi
 Ntprint.inf file 19

P
 parallel port
 system requirements xiv
 Windows 95 7 to 10, ?? to 10
 Windows NT 4.0 23 to 25
 PostScript
 printing with Mac OS 40
 printing with Windows 95 2
 printing with Windows NT 4.0 17
 PostScript Printer Description file, *see* PPD
 PostScript printer driver
 for Mac OS, version 8.5 xiii
 for Windows 95, version 4.2 xiii
 installing (Installer WebTool) 46
 installing (Mac OS) 40
 installing (Windows 95) 3 to 6
 installing (Windows NT 4.0) 17
 PPD
 overview xi
 selecting for Mac OS 41, 50
 selecting for Windows 95 4
 selecting for Windows NT 4.0 19
 printer drivers, *see* PostScript printer drivers
 printing
 Mac OS 40
 Windows 95 2
 Windows NT 4.0 22
 Print Test Page option 16
 Prntdrv.exe file 47

R

RAM, amount required xii, xiii, xiv
remote server management 45

S

Server Name 13
SMB printing, *see* Windows 95
Solaris, supported version xiv
specifications, color server x
Spooler, *see* Fiery Spooler
SunOS, supported version xiv
System 7.5 xiii
see also Mac OS
system requirements
 IPX xiv
 Mac OS xiii
 parallel port xiv
 UNIX xiv
 Windows xii

T

TCP/IP
 configuring the connection 33
 printing software conforming to
 RFC1179 xiv
 supported by color server x
test page 16
thicknet cable x
thinnet cable x
Token Ring, optional kit xi
troubleshooting
 Mac OS computers 50
 Windows computers 49

U

UNIX workstations, requirements for
 printing to color server xiv
unshielded twisted pair (UTP) cable x
User Software CD
 Adobe PS Printer Driver xi
 contents (Mac OS) 39, 40
 contents (Windows) 1, 39
 installing from (Mac OS) 40
 installing from (Windows) 2, 27, 38, 44
 overview xi
utilities, *see* client utilities, Fiery WebTools

W

WebTools, *see* Fiery WebTools
Windows
 copying color files 38, 44
 installers 1
 installing software 27
 system requirements xii
 troubleshooting 49
Windows 95
 IPX/SPX 10
 parallel port 7 to 10, ?? to 10
 PostScript printer driver 3 to 6
 SMB printing 13 to 16
Windows NT 4.0
 installing printer drivers 17
 IPX 26 to 27
 IPX connection 25
 PostScript printer driver 2
 printing from parallel port 23 to 25
 printing requirements 22
 requirements xiii
 setting up PostScript printing 17
 troubleshooting 49
Windows NT Installation CD 21
WINS Name Server 13, 16



**ELECTRONICS
FOR
IMAGING, INC.**

Corporate Headquarters
2855 Campus Drive
San Mateo, CA 94403
USA

World Wide Web: <http://www.efi.com>

UK
Stonebridge House
Padbury Oaks
Old Bath Road
Longford, Middlesex UB7 0EW
United Kingdom

France
Immeuble Atria
5, place des Marseillais
94227 Charenton-le-Pont Cedex
France

Germany
Münchner Straße 24
D-85774 Unterföhring
Germany

Japan
Kakimi-Koujimachi Building, 7F
3-2 Koujimachi
Chiyoda-ku, Tokyo 102
Japan

45000217